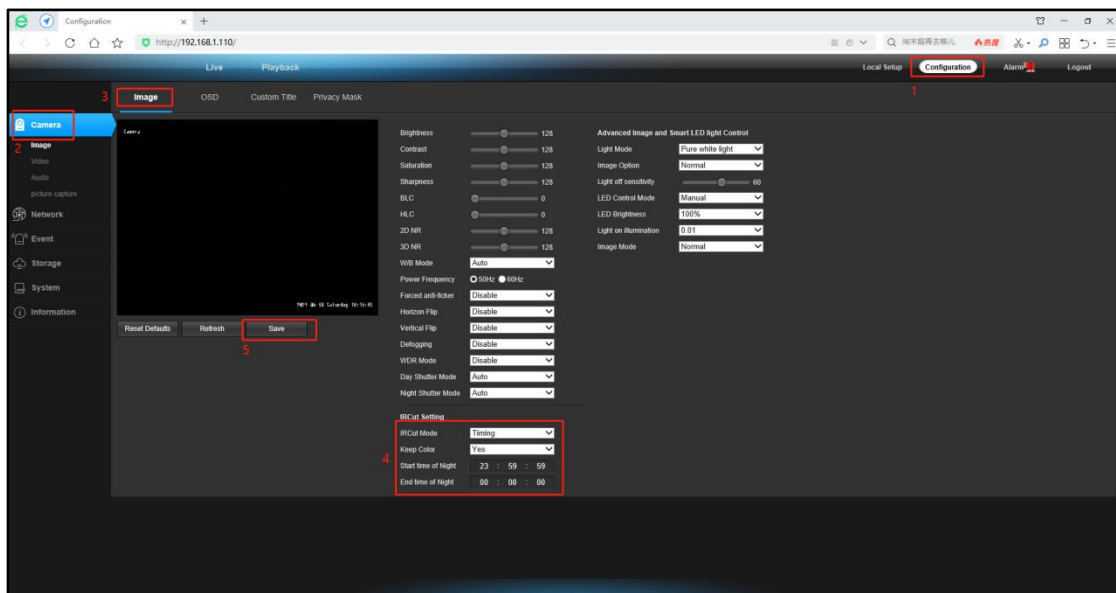


How to force an LED on and off

Forcibly turn off the camera's LED setting method

Setting method:

1. Camera login web interface > Configuration;
2. Enter Camera;
3. Click Image;
4. Choose IRCut Setting > IRCut Mode select Timing > Keep Color Yes > Setting Star time of Night 23:59:59 > End time of Night 00:00:00;
5. Click Save, Complete the setup.



Forcibly turn on the camera's LED setting method

Setting method:

1. Camera login web interface > Configuration;
2. Enter Camera;
3. Click Image;
4. Check if the camera's time display is correct;
5. Choose IRCut Setting > IRCut Mode select Timing > Keep Color Yes >Setting turn on light "Start time of Night"> Setting turn off light "End time of Night" ;
6. Setting Led Brightness value;
7. Click Save,Complete the setup.

